



CREDO

GEWEBEBESCHREIBUNG

Dessin: CREDO
Material: 95% WV 5% PA
Gewicht ca.: 610 g/m² - 870 g/lfm
Breite ca.: 140 cm

QUALITÄTSBESCHREIBUNG

Scheuerfestigkeit: 100.000 Touren DIN EN ISO 12947-2
Flammschutz: bitte angeben
FAR 25.853 (12 Sek. vertikal)
CAL TB 117 - 2013
DIN 4102-1 B2
EN 13501-1
EN 1021 -1 und -2
BS 5852:1979 (part1)
BS 5852:2006 (part2) Crib5
BKZ: 5.3 SN 198898
UNI 9175 (1 IM)
NF P92 503-507 M2
IMO: 2014/90/EU Schiffsausrüstungsrichtlinie
Akustik: R_s=613 Pa s/m DIN EN 29053 Strömungswiderstand
Schallabsorption: gerafft: α_w = 0,80 (H) / B / ISO 11654
Ökologie: RAL-UZ 117 Anlage 2+3
Lichtechtheit: min. 5-8 EN ISO 105-B02
Pilling: min. 4-5 EN ISO 12945-2
Dimout Option auf Anfrage

QUALITÄTSMERKMALE – ROHI WOLLE

natürlich nachwachsender Rohstoff
Wolle ist von Natur aus schwer entflammbar,
pflegeleicht, atmungsaktiv und schmutzabweisend
langlebig, hoch strapazierfähig
reine Schurwolle – Kammgarnqualität

QUALITÄTSMERKMALE – ROHI STOFFE

Garnfärbung für bestmögliche Farbbrillanz
und hohe Lichtechtheit
Spezialausrüstung gegen Schrumpf und Pillingneigung
Produktion und Design in Deutschland seit 1933
individuelle Stoffentwicklung
für Architektur- und Designkonzepte

DESCRIPTION OF FABRICS

Design: CREDO
Content: 95% WV 5% PA
Weight approx.: 610 g/m² - 870 g/lm
Width approx.: 140 cm

QUALITY DETAILS

Abrasion: 100.000 rubs DIN EN ISO 12947-2
Flammability: please specify
FAR 25.853 (12 sec. vertical)
CAL TB 117 - 2013
DIN 4102-1 B2
EN 13501-1
EN 1021 -1 and -2
BS 5852:1979 (part1)
BS 5852:2006 (part2) Crib5
BKZ: 5.3 SN 198898
UNI 9175 (1 IM)
NF P92 503-507 M2
IMO: 2014/90/EU Marine Equipment Directive (MED)
Acoustic: R_s=613 Pa s/m DIN EN 29053 flow resistivity
Sound absorption: folded: α_w = 0.80 (H) / B / ISO 11654
Ecology: RAL-UZ 117 Attachment 2+3
Lightfastness: min. 5-8 EN ISO 105-B02
Pilling: min. 4-5 EN ISO 12945-2
Dimout option on request

QUALITY CHARACTERISTICS – ROHI WOOL

natural, renewable material
wool is flame retardant, easy-care,
breathable and dirt resistant
long-lasting, hard-wearing
virgin wool – worsted yarn quality

QUALITY FEATURES – ROHI FABRICS

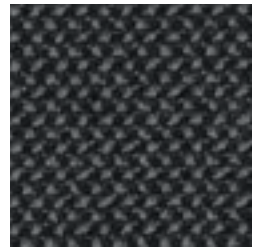
yarn dyed for brilliant colours and
good lightfastness
special finish: anti-shrink, anti-pilling
production and design 'Made in Germany' since 1933
development of individual fabrics for
architects' and designers' concepts



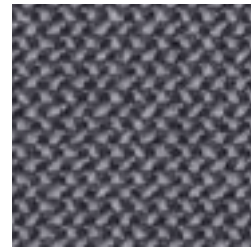
aktuellste Spezifikationen /
latest specifications:
rohi.com/credo



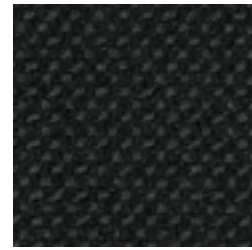
CREDO



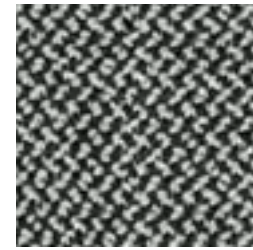
asphalt



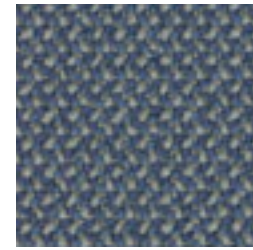
carbon



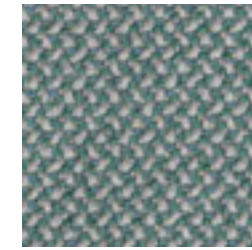
black



pepper



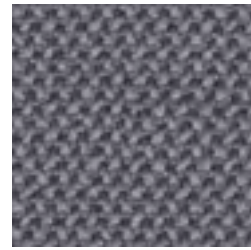
sea



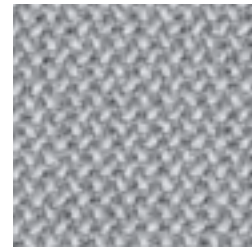
lake



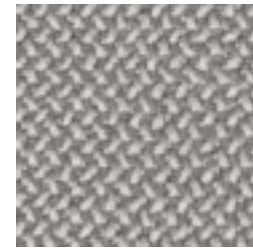
ROHI



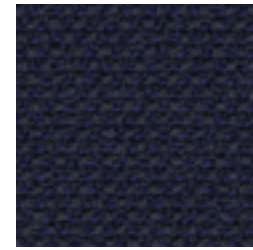
fels



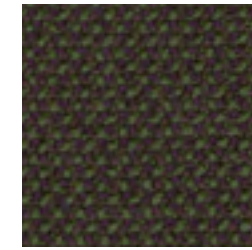
chalk



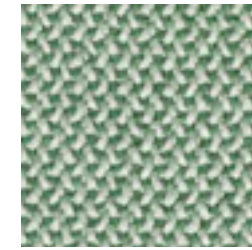
zinn



navy



forest

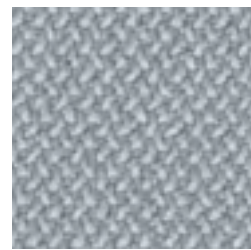


aloe

NATURAL MATERIAL
SOFT TOUCH
HIGHEND QUALITY
YARN DYED
VIRGIN WOOL
DESIGN
MANUFACTURE
EASY CARE
LASTING VALUE



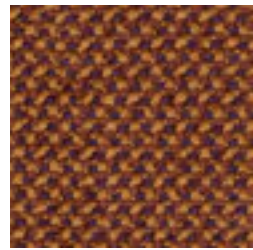
aureo



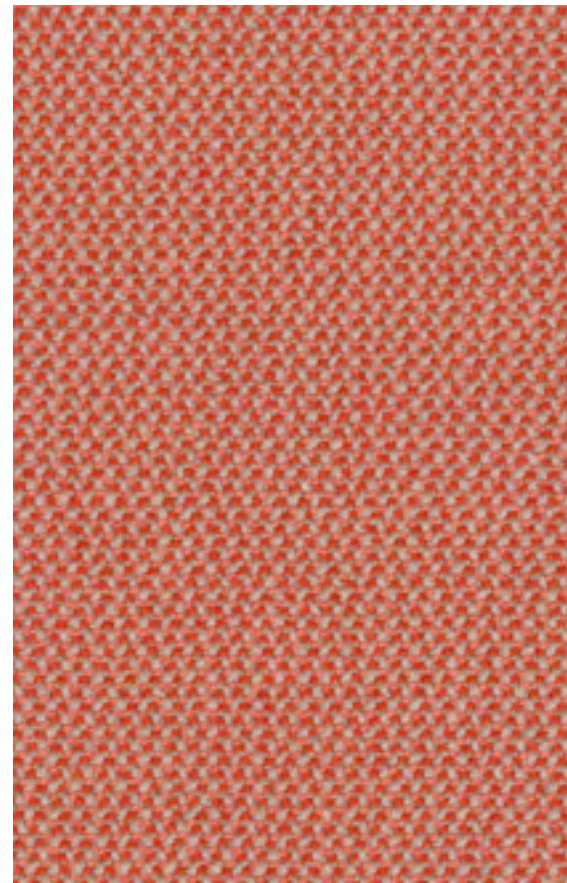
diamond



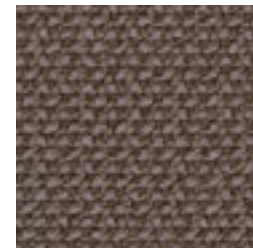
jaspis



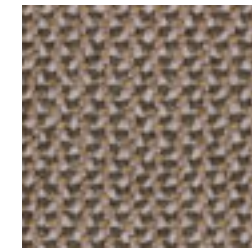
kupfer



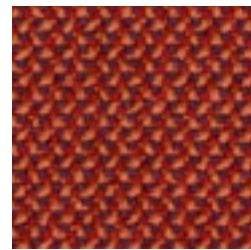
grapefruit



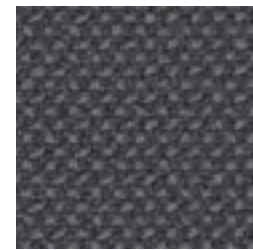
walnut



fango



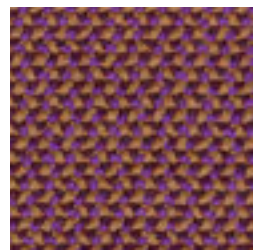
lampion



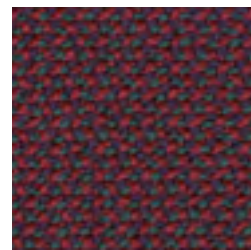
schiefer



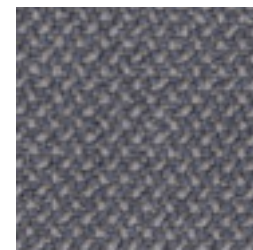
macadamia



breva



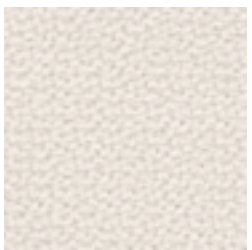
rubin



taupe



calla



snow