

ROHI

NOVUM

ROHI STOFFE GMBH / schoenlinderstr. 1, 82538 geretsried, germany / t +49-8171-93540 / f +49-8171-935499 / info@rohi.com / www.rohi.com

ROHI

GEWEBEBESCHREIBUNG

Dessin: NOVUM
Material: 96% WW 4% PA
Gewicht ca.: 660 g/m² - 990 g/lm
Breite ca.: 150 cm

QUALITÄTSBESCHREIBUNG

Scheuerfestigkeit: 90.000 Touren DIN EN ISO 12947-2
Flammschutz: (bei Bestellung bitte angeben)
FAR 25.853 (12 Sek. vertikal)
CAL TB 117 - 2013
DIN 4102-1 B2
EN 13501-1
EN 1021 -1 und -2
BS 5852:2006 (part1)
BS 5852:2006 (part2) Crib5
IMO: 2014/90/EU Schiffsausrüstungsrichtlinie
Lichtechtheit: min. 5-8 EN ISO 105-B02
Pilling: min. 4-5 EN ISO 12945-2
Akustik: R_w=1199 Pa s/m DIN EN 29053 Strömungswiderstand
Ökologie: RAL-UZ 117 Anlage 2+3

QUALITÄTSMERKMALE – ROHI WOLLE

natürlich nachwachsender Rohstoff
Wolle ist von Natur aus schwer entflammbar,
pflegeleicht, atmungsaktiv und schmutzabweisend
langlebig, hoch strapazierfähig
reine Schurwolle – Kammgarnqualität

QUALITÄTSMERKMALE – ROHI STOFFE

Garnfärbung für bestmögliche Farbbrillanz
und hohe Lichtechtheit
Spezialausrüstung gegen Schrumpfung und Pillingneigung
Produktion und Design in Deutschland seit 1933
individuelle Stoffentwicklung
für Architektur- und Designkonzepte

EMPFOHLENE EINSATZBEREICHE

Objektbereiche und private Wohnräume
mit sehr hoher Beanspruchung

DESCRIPTION OF FABRICS

Design: NOVUM
Content: 96% WW 4% PA
Weight approx.: 660 g/m² - 990 g/lm
Width approx.: 150 cm

QUALITY DETAILS

Abrasion resistance: 90.000 rubs DIN EN ISO 12947-2
Flame resistance: (please specify when ordering)
FAR 25.853 (12 sec. vertical)
CAL TB 117 - 2013
DIN 4102-1 B2
EN 13501-1
EN 1021 -1 and -2
BS 5852:2006 (part1)
BS 5852:2006 (part2) Crib5
IMO: 2014/90/EU Marine Equipment Directive
Colour fastness to light: min. 5-8 EN ISO 105-B02
Pilling: min. 4-5 EN ISO 12945-2
Acoustic: R_w=1199 Pa s/m DIN EN 29053 flow resistivity
Ecology: RAL-UZ 117 Attachment 2+3

QUALITY CHARACTERISTICS – ROHI WOOL

natural, renewable material
wool is flame retardant, easy-care,
active-breathing and dirt resistant
long-lasting, hard-wearing
virgin wool – worsted yarn quality

QUALITY FEATURES – ROHI FABRICS

yarn dyed for brilliant colours and
good lightfastness
special finish: anti-shrink, anti-pilling
production and design 'Made in Germany' since 1933
development of individual fabrics for
architects' and designers' concepts

RECOMMENDED APPLICATION AREAS

public and residential premises with
heavy wear and tear



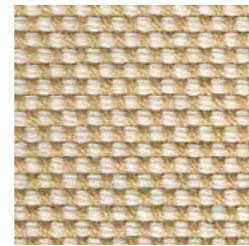
NOVUM



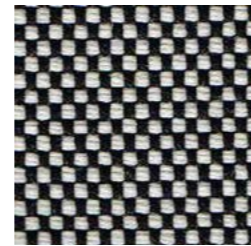
snow



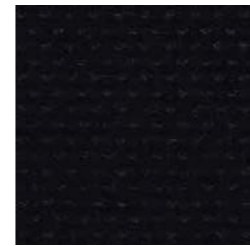
angora



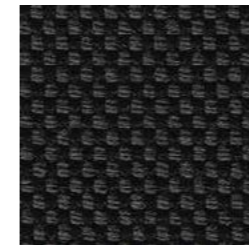
moon



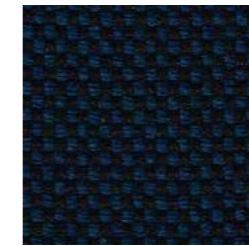
pepper



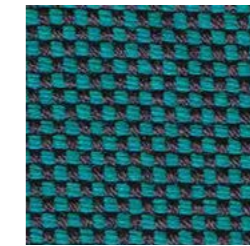
ebony



lanoso



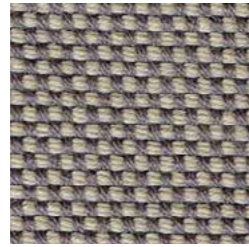
amur



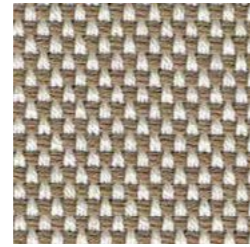
prisma



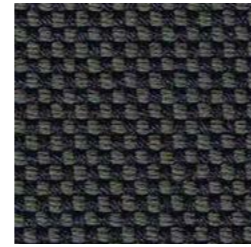
ROHI



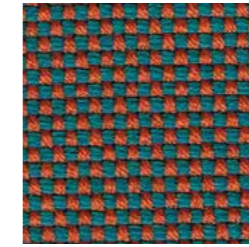
stone



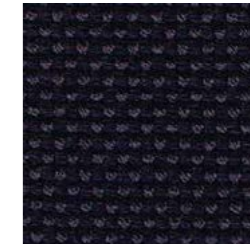
cocos



carbon



mambo



prune



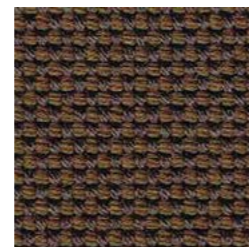
viola



kies



paradise



cacao



azur



blues



magenta

NATURAL MATERIAL
SOFT TOUCH
HIGHEND QUALITY
YARN DYED
VIRGIN WOOL
DESIGN
MANUFACTURE
EASY CARE
LASTING VALUE



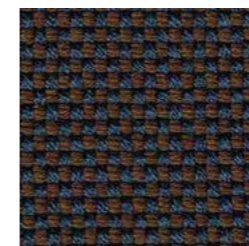
plaza



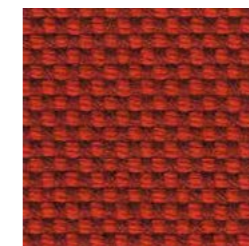
santos



samoa



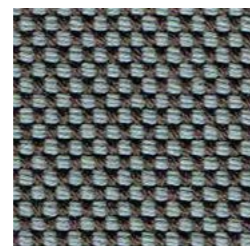
lord



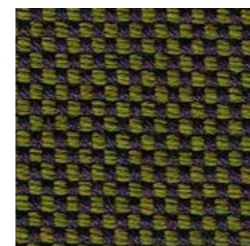
heart



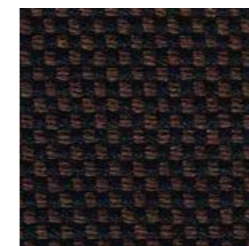
flamingo



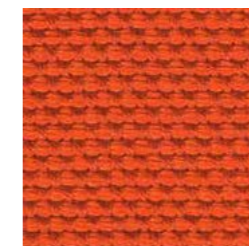
prime



pinie



rosewood



sunset



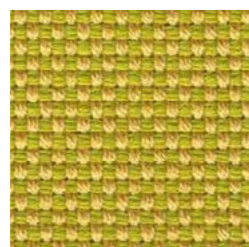
terra



litchi



lagoon



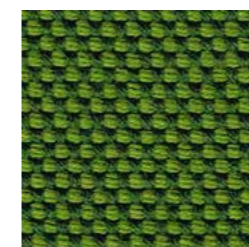
pear



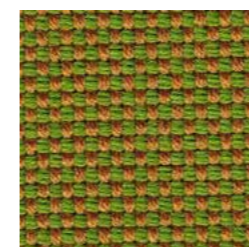
delphi



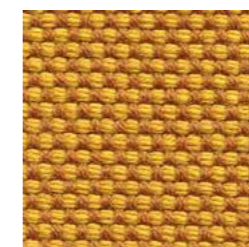
seed



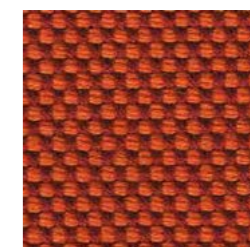
moss



tivoli



curry



coral