



ROHI

OPERA

ROHI STOFFE GMBH / schoenlinderstr. 1, 82538 geretsried, germany / t +49-8171-93540 / f +49-8171-935499 / info@rohi.com / www.rohi.com

ROHI

GEWEBEBESCHREIBUNG

Dessin: OPERA
Material: 96% WW 4% PA
Gewicht ca.: 720 g/m² - 1010 g/lfm
Breite ca.: 140 cm

QUALITÄTSBESCHREIBUNG

Scheuerfestigkeit: 90.000 Touren DIN EN ISO 12947-2

Flammschutz: (bei Bestellung bitte angeben)
FAR 25.853 (12 Sek. vertikal)
CAL TB 117 - 2013
DIN 4102-1 B2
EN 13501-1
EN 1021 -1 und -2
BS 5852:2006 (part1)
BS 5852:2006 (part2) Crib5
UNI 9175 (1 IM)
IMO: MED 96/98/EG Schiffsausrüstungsrichtlinie

Lichteinheit: min. 5-8 EN ISO 105-B02
Pilling: min. 4-5 EN ISO 12945-2
Akustik: R_s=2078 Pa s/m DIN EN 29053 Strömungswiderstand
Ökologie: RAL-UZ 117 Anlage 2+3

QUALITÄTSMERKMALE – ROHI WOLLE

natürlich nachwachsender Rohstoff

Wolle ist von Natur aus schwer entflammbar,
pflegeleicht, atmungsaktiv und schmutzabweisend

langlebig, hoch strapazierfähig

Merinowolle – Kammgarnqualität

QUALITÄTSMERKMALE – ROHI STOFFE

Garnfärbung für bestmögliche Farbbrillanz
und hohe Lichteinheit

Spezialausrüstung gegen Schrumpfung und Pillingneigung

Produktion und Design in Deutschland seit 1933

individuelle Stoffentwicklung
für Architektur- und Designkonzepte

EMPFOHLENE EINSATZBEREICHE

Objektbereiche und private Wohnräume
mit sehr hoher Beanspruchung

DESCRIPTION OF FABRICS

Design: OPERA
Content: 96% WW 4% PA
Weight approx.: 720 g/m² - 1010 g/lm
Width approx.: 140 cm

QUALITY DETAILS

Abrasion resistance: 90.000 rubs DIN EN ISO 12947-2

Flame resistance: (please specify when ordering)
FAR 25.853 (12 sec. vertical)
CAL TB 117 - 2013
DIN 4102-1 B2
EN 13501-1
EN 1021 -1 and -2
BS 5852:2006 (part1)
BS 5852:2006 (part2) Crib5
UNI 9175 (1 IM)
IMO: MED 96/98/EC Marine Equipment Directive

Colour fastness to light: min. 5-8 EN ISO 105-B02
Pilling: min. 4-5 EN ISO 12945-2
Acoustic: R_s=2078 Pa s/m DIN EN 29053 flow resistivity
Ecology: RAL-UZ 117 Attachment 2+3

QUALITY CHARACTERISTICS – ROHI WOOL

natural, renewable material

wool is flame retardant, easy-care,
active-breathing and dirt resistant

long-lasting, hard-wearing

Merino wool – worsted yarn quality

QUALITY FEATURES – ROHI FABRICS

yarn dyed for brilliant colours and
good lightfastness

special finish: anti-shrink, anti-pilling

production and design 'Made in Germany' since 1933

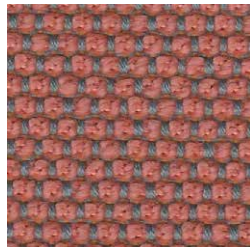
development of individual fabrics for
architects' and designers' concepts

RECOMMENDED APPLICATION AREAS

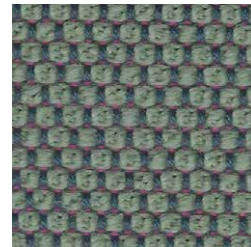
public and residential premises with
heavy wear and tear



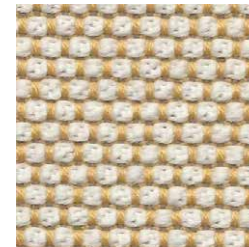
OPERA



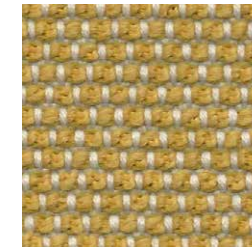
guave



aloe



sorbet



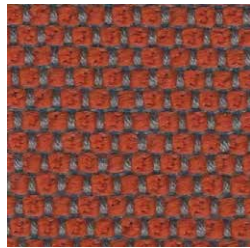
aureo



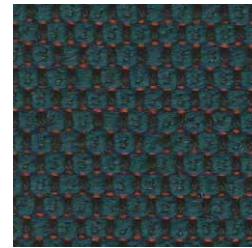
kristall



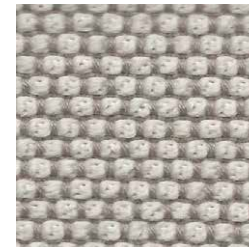
ROHI



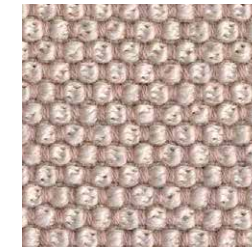
clementine



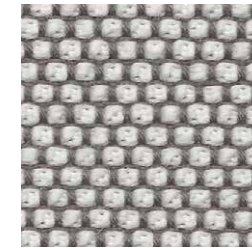
smaragd



macadamia



calla



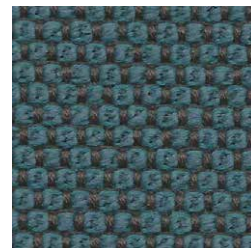
mirror



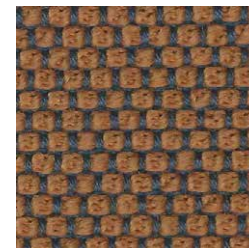
flanell



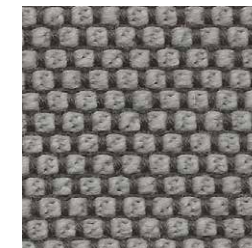
indio



delphi



brick

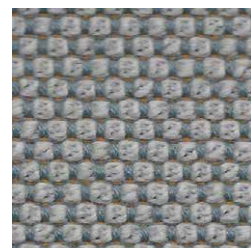


fango

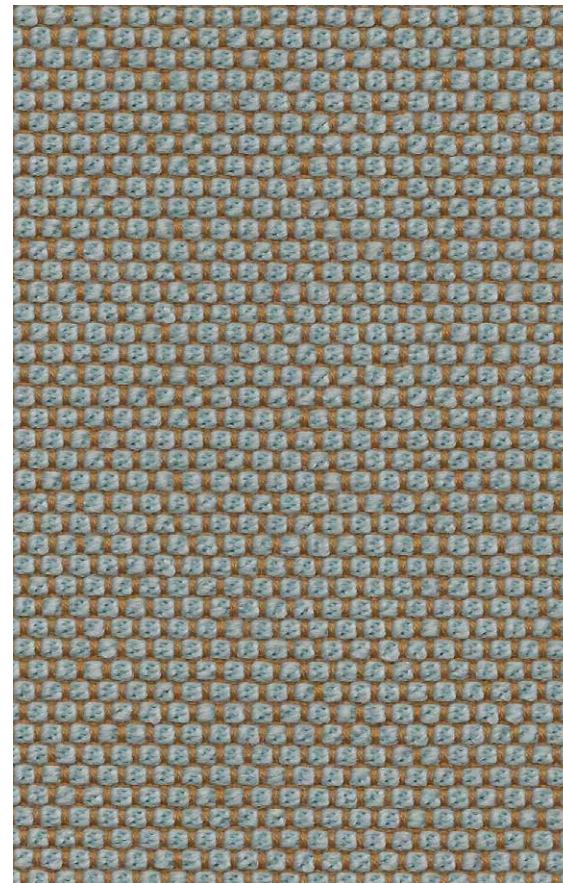
NATURAL MATERIAL
SOFT TOUCH
HIGHEND QUALITY
YARN DYED
MERINO WOOL
DESIGN
MANUFACTURE
EASY CARE
LASTING VALUE



bleu



lake



jade



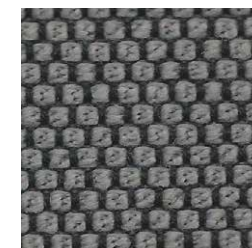
maple



taupe



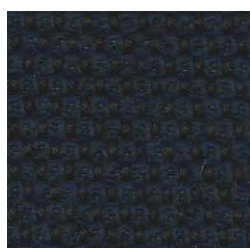
anthrazit



kies



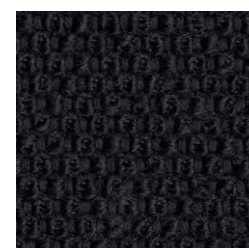
prime



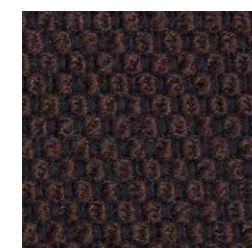
navy



delft



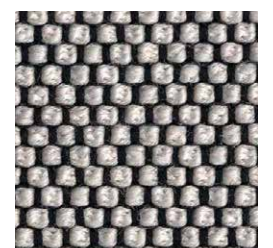
ebony



rosewood



carbon



pepper