



SERA

ROHI STOFFE GMBH / schoenlinderstr. 1, 82538 geretsried, germany / t +49-8171-93540 / f +49-8171-935499 / info@rohi.com / www.rohi.com



#### GEWEBEBESCHREIBUNG

Dessin: SERA  
Material: 94% WV 6% PA  
Gewicht ca.: 650 g/m<sup>2</sup> - 910 g/lfm  
Breite ca.: 140 cm

#### QUALITÄTSBESCHREIBUNG

Scheuerfestigkeit: 122.000 Touren DIN EN ISO 12947-2

Flammschutz: bitte angeben  
FAR 25.853 (12 Sek. vertikal)  
CAL TB 117 - 2013  
DIN 4102-1 B2  
EN 13501-1  
EN 1021 -1 und -2  
BS 5852:2006 (part1)  
BS 5852:2006 (part2) Crib5  
IMO: 2014/90/EU Schiffsausrüstungsrichtlinie

Akustik: R<sub>s</sub>=1059 Pa s/m DIN EN 29053 Strömungswiderstand  
Schallabsorption: gerafft: α<sub>w</sub> = 0,75 (H) / C / ISO 11654  
Ökologie: RAL-UZ 117 Anlage 2+3  
Lichtdurchlässigkeit: EN 410 (DIN EN 14501)  
Lichteinheit: min. 5-8 EN ISO 105-B02  
Pilling: min. 4-5 EN ISO 12945-2  
Dimout Option auf Anfrage

#### QUALITÄTSMERKMALE – ROHI WOLLE

natürlich nachwachsender Rohstoff  
Wolle ist von Natur aus schwer entflammbar,  
pflegeleicht, atmungsaktiv und schmutzabweisend  
langlebig, hoch strapazierfähig  
reine Schurwolle – Kammgarnqualität

#### QUALITÄTSMERKMALE – ROHI STOFFE

Garnfärbung für bestmögliche Farbbrillanz  
und hohe Lichteinheit  
Spezialausrüstung gegen Schrumpfung und Pillingneigung  
Produktion und Design in Deutschland seit 1933  
individuelle Stoffentwicklung  
für Architektur- und Designkonzepte

#### DESCRIPTION OF FABRICS

Design: SERA  
Content: 94% WV 6% PA  
Weight approx.: 650 g/m<sup>2</sup> - 910 g/lm  
Width approx.: 140 cm

#### QUALITY DETAILS

Abrasion: 122.000 rubs DIN EN ISO 12947-2

Flammability: please specify  
FAR 25.853 (12 sec. vertical)  
CAL TB 117 - 2013  
DIN 4102-1 B2  
EN 13501-1  
EN 1021 -1 and -2  
BS 5852:2006 (part1)  
BS 5852:2006 (part2) Crib5  
IMO: 2014/90/EU Marine Equipment Directive (MED)

Acoustic: R<sub>s</sub>=1059 Pa s/m DIN EN 29053 flow resistivity  
Sound absorption: folded: α<sub>w</sub> = 0.75 (H) / C / ISO 11654  
Ecology: RAL-UZ 117 Attachment 2+3  
Light transmission: EN 410 (DIN EN 14501)  
Lightfastness: min. 5-8 EN ISO 105-B02  
Pilling: min. 4-5 EN ISO 12945-2  
Dimout option on request

#### QUALITY CHARACTERISTICS – ROHI WOOL

natural, renewable material  
wool is flame retardant, easy-care,  
breathable and dirt resistant  
long-lasting, hard-wearing  
virgin wool – worsted yarn quality

#### QUALITY FEATURES – ROHI FABRICS

yarn dyed for brilliant colours and  
good lightfastness  
special finish: anti-shrink, anti-pilling  
production and design 'Made in Germany' since 1933  
development of individual fabrics for  
architects' and designers' concepts



aktuellste Spezifikationen /  
latest specifications:

[rohi.com/sera](http://rohi.com/sera)





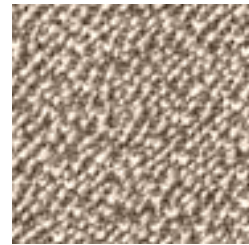
# SERA



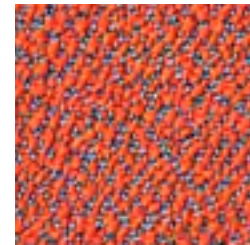
snow



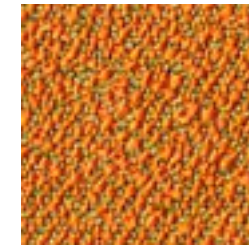
calla



flanell



glow



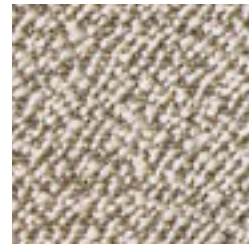
chutney



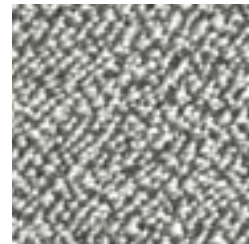
ROHI



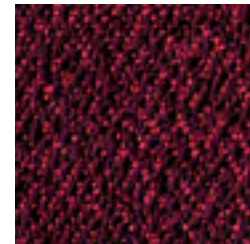
stone



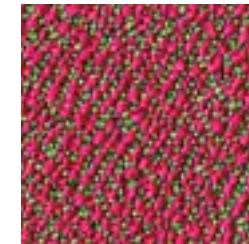
almond



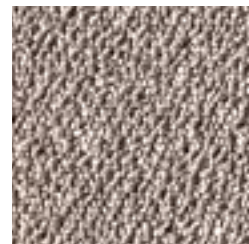
porcelain



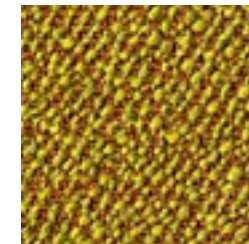
berry



lotus



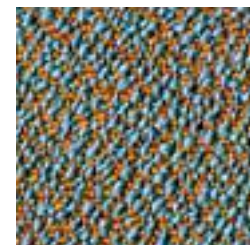
mirror



tivoli

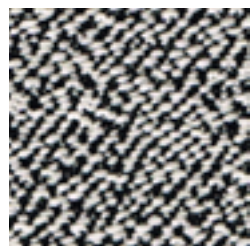


taupe



mirage

NATURAL MATERIAL  
SOFT TOUCH  
HIGHEND QUALITY  
YARN DYED  
VIRGIN WOOL  
DESIGN  
MANUFACTURE  
EASY CARE  
LASTING VALUE



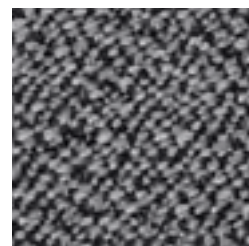
pepper



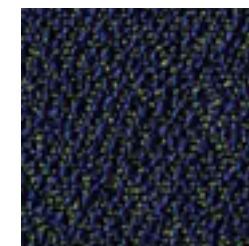
fango



walnut



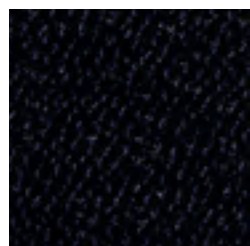
carbon



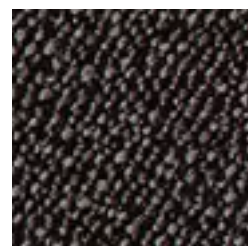
mare



torba



ebony



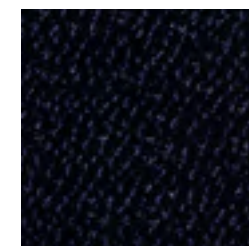
graphit



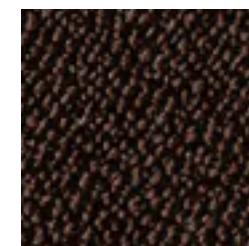
gravel



anthrazit



amur



rosewood