

ROHI

TOPIA

ROHI STOFFE GMBH / schoenlinderstr. 1, 82538 geretsried, germany / t +49-8171-93540 / f +49-8171-935499 / info@rohi.com / www.rohi.com

ROHI

#### GEWEBEBESCHREIBUNG

Dessin: TOPIA  
Material: 95% WW 5% PA  
Gewicht ca.: 440 g/m<sup>2</sup> - 660 g/lfm  
Breite ca.: 150 cm

#### QUALITÄTSBESCHREIBUNG

Scheuerfestigkeit: 50.000 Touren DIN EN ISO 12947-2

Flammschutz: bitte angeben  
FAR 25.853 (12 Sek. vertikal)  
CAL TB 117 - 2013  
DIN 4102-1 B2  
EN 13501-1  
EN 1021 -1 und -2  
BS 5852:1979 (part1)  
BS 5852:2006 (part2) Crib5  
BKZ: 5,3 SN 198898  
UNI 9175 (1 IM)

IMO: 2014/90/EU Schiffsausrüstungsrichtlinie  
Bahn: EN 45545-2, R21, ISO 5660-1 (HL3)

Akustik:  $R_w=881$  Pa s/m DIN EN 29053 Strömungswiderstand  
Schallabsorption: geräfft:  $\alpha_w = 0,80$  (H) / B / ISO 11654  
Ökologie: RAL-UZ 117 Anlage 2+3  
Lichtdurchlässigkeit: EN 410 (DIN EN 14501)  
Lichtechtheit: min. 5-8 EN ISO 105-B02  
Pilling: min. 4-5 EN ISO 12945-2  
Dimout Option auf Anfrage

#### QUALITÄTSMERKMALE – ROHI WOLLE

natürlich nachwachsender Rohstoff  
Wolle ist von Natur aus schwer entflammbar,  
pflegeleicht, atmungsaktiv und schmutzabweisend  
langlebig, hoch strapazierfähig  
reine Schurwolle – Kammgarnqualität

#### QUALITÄTSMERKMALE – ROHI STOFFE

Garnfärbung für bestmögliche Farbbrillanz  
und hohe Lichtechtheit  
Spezialausrüstung gegen Schrumpfung und Pillingneigung  
Produktion und Design in Deutschland seit 1933  
individuelle Stoffentwicklung  
für Architektur- und Designkonzepte

#### DESCRIPTION OF FABRICS

Design: TOPIA  
Content: 95% WW 5% PA  
Weight approx.: 440 g/m<sup>2</sup> - 660 g/lm  
Width approx.: 150 cm

#### QUALITY DETAILS

Abrasion: 50.000 rubs DIN EN ISO 12947-2

Flammability: please specify  
FAR 25.853 (12 sec. vertical)  
CAL TB 117 - 2013  
DIN 4102-1 B2  
EN 13501-1  
EN 1021 -1 and -2  
BS 5852:1979 (part1)  
BS 5852:2006 (part2) Crib5  
BKZ: 5.3 SN 198898  
UNI 9175 (1 IM)

IMO: 2014/90/EU Marine Equipment Directive (MED)  
Train: EN 45545-2, R21, ISO 5660-1 (HL3)

Acoustic:  $R_w=881$  Pa s/m DIN EN 29053 flow resistivity  
Sound absorption: folded:  $\alpha_w = 0.80$  (H) / B / ISO 11654  
Ecology: RAL-UZ 117 Attachment 2+3  
Light transmission: EN 410 (DIN EN 14501)  
Lightfastness: min. 5-8 EN ISO 105-B02  
Pilling: min. 4-5 EN ISO 12945-2  
Dimout option on request

#### QUALITY CHARACTERISTICS – ROHI WOOL

natural, renewable material  
wool is flame retardant, easy-care,  
breathable and dirt resistant  
long-lasting, hard-wearing  
virgin wool – worsted yarn quality

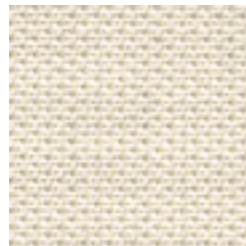
#### QUALITY FEATURES – ROHI FABRICS

yarn dyed for brilliant colours and  
good lightfastness  
special finish: anti-shrink, anti-pilling  
production and design 'Made in Germany' since 1933  
development of individual fabrics for  
architects' and designers' concepts

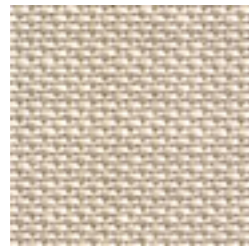


aktuellste Spezifikationen /  
latest specifications:  
[rohi.com/topia](http://rohi.com/topia)

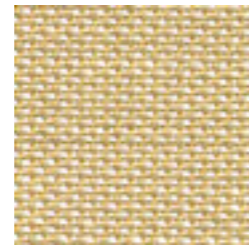
# TOPIA



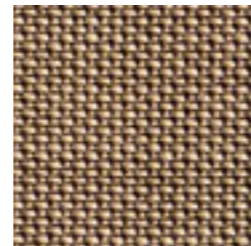
snow



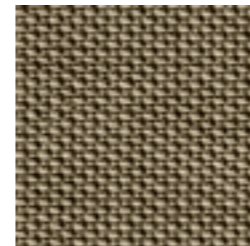
angora



moon



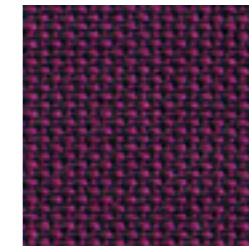
walnut



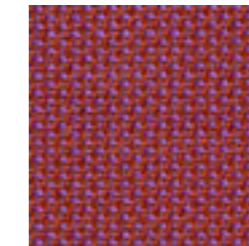
taupe



stone



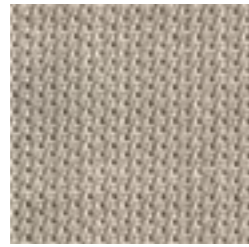
viola



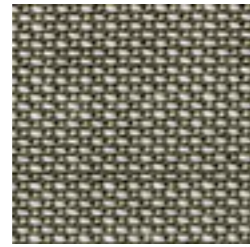
litchi



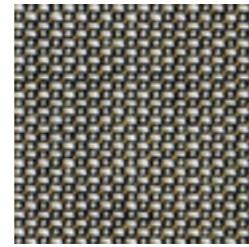
ROHI



chrom



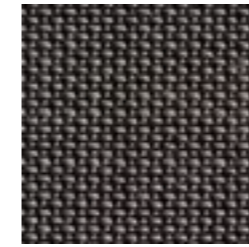
silver



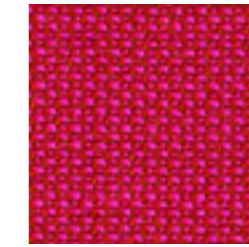
platin



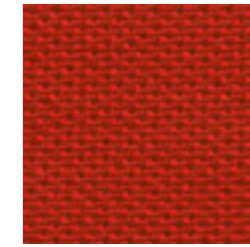
truffle



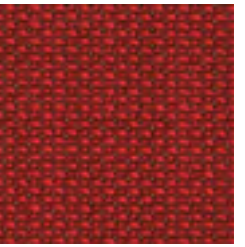
graphit



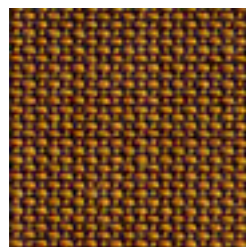
calluna



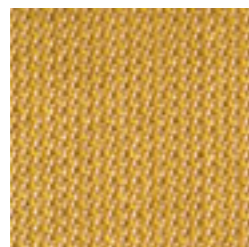
chilli



heart



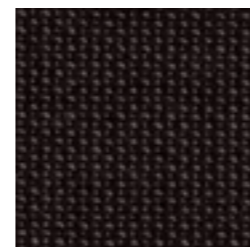
gold



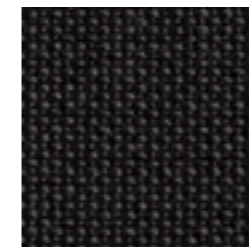
aureo



peat



lanoso



anthrazit

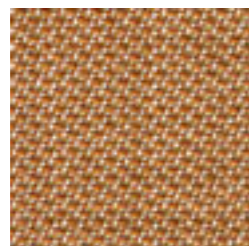


coral

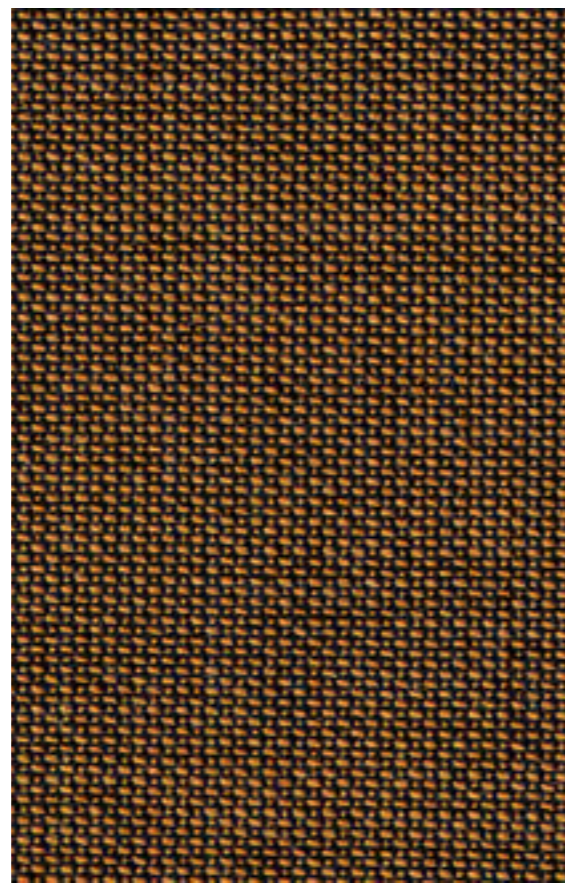
NATURAL MATERIAL  
SOFT TOUCH  
HIGHEND QUALITY  
YARN DYED  
VIRGIN WOOL  
DESIGN  
MANUFACTURE  
EASY CARE  
LASTING VALUE



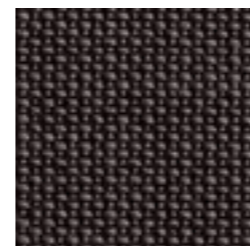
kupfer



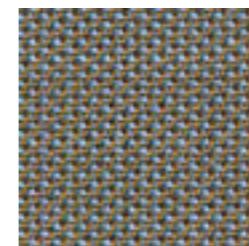
messing



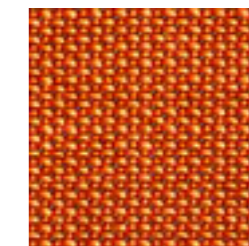
bronze



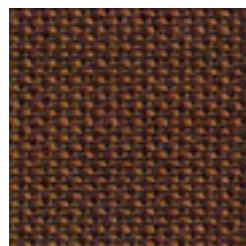
schiefer



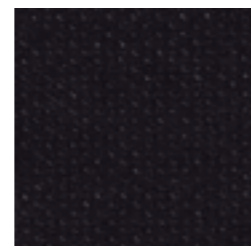
seashell



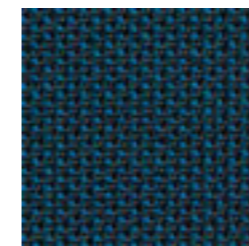
jelly



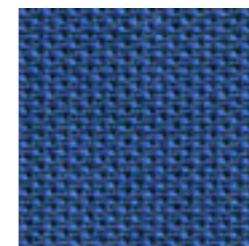
lord



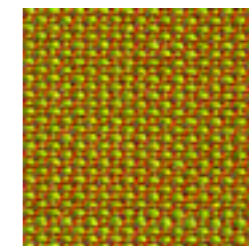
ebony



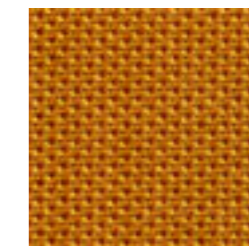
azur



enzian



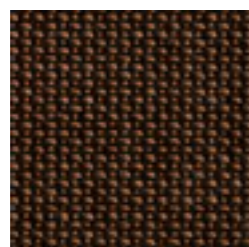
tivoli



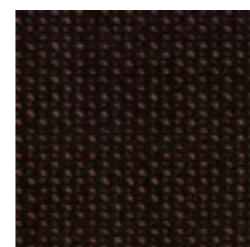
curry



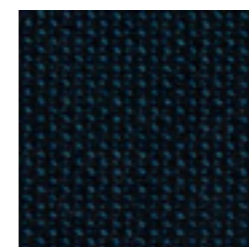
pinie



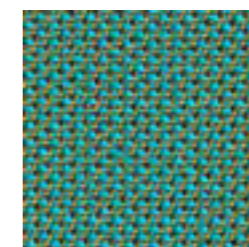
coffee



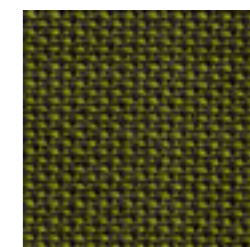
rosewood



orion



tropic



palm